

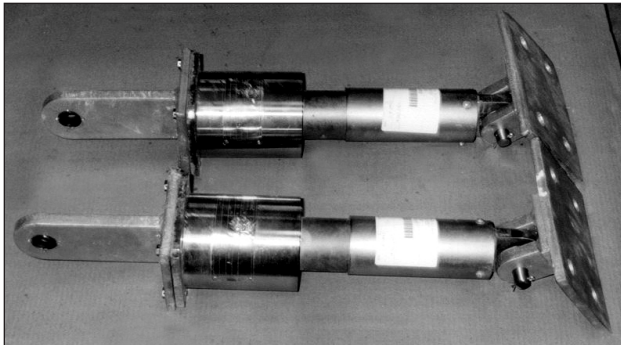
MSA 1/4-MSA-100

MECHANICAL SNUBBER ASSEMBLIES

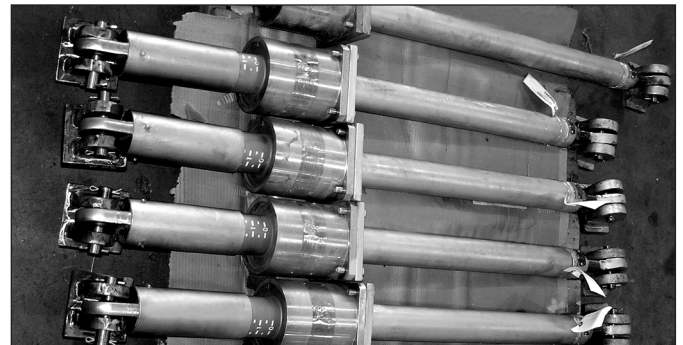
www.pipingtech.com/msa

APPLICATION:

The MSA series is a velocity limiting mechanical snubber designed to protect critical plant components by preventing shock forces from causing damaging motions in piping and related systems during seismic disturbances or other transient forces. The mechanical snubber controls damaging motions by becoming a load-carrying member between the piping and the structural member in the event of an abnormal motion or disturbance. Otherwise, during normal thermal motion and operation it telescopes freely in either direction through its normal operating stroke.



COMPLETE MECHANICAL SNUBBER ASSEMBLIES

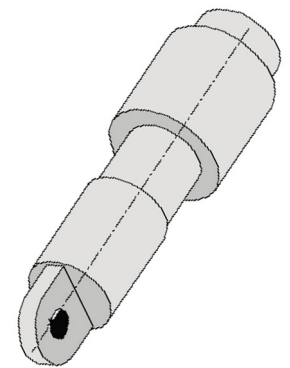


MECHANICAL SNUBBER ASSEMBLIES

ENGINEERED SPRING SUPPORTS

MECHANICAL SNUBBER SIZING

SHOCK ARRESTOR SIZE NUMBER	LOAD (lb.)	MINIMUM C-to-C WITH ADJUSTMENT	MAXIMUM C-to-C	MAXIMUM STROKE (in.)
MSA - 1/4	350	19 5/16	56	4
MSA - 1/2	650	17 1/8	56	2 1/2
MSA - 1	1,500	24 1/4	82	4
MSA - 3	6,000	30	98	5
MSA - 10	15,000	34 5/8	122	6
MSA - 35	50,000	49 1/8	247	6
MSA - 100	120,000	63	257	6



ISOMETRIC VIEW

MECHANICAL SNUBBER DATA

SHOCK ARRESTOR SIZE NUMBER	A	B	REAR BRACKET		TAKE OUT
	PIN DIAMETER	PIPE SIZE	BASE PLATE		
MSA - 1/4	3/8	1" SCH.40	2	1	1 1/2
MSA - 1/2	3/8	1" SCH.40	2	1	1 1/2
MSA - 1	1/2	1 1/4" SCH.40	3	1 1/2	2
MSA - 3	3/4	1 1/2" SCH.40	3 1/2	2 1/4	2 1/2
MSA - 10	1	2" SCH.80	4 1/2	3	3 3/16
MSA - 35	1 1/2	4" SCH.80	7	5 3/4	5 1/4
MSA - 100	2 1/2	6" SCH.120	9 1/2	9 1/2	8