



## FIG. 4800-A

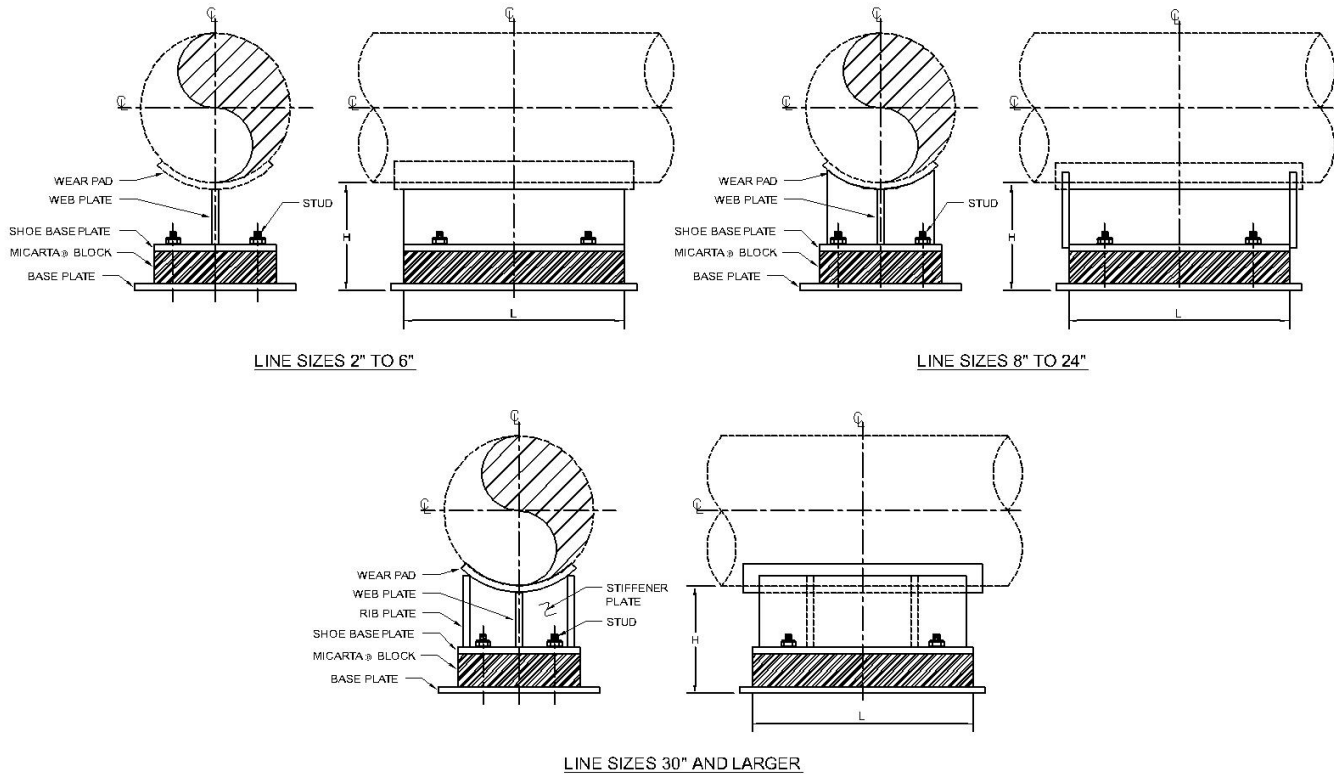
## INSULATED COLD SHOE WITH G10 (ANCHOR)

www.pipingtech.com/fig4800a

**MATERIAL:** Shoe: Same as Pipe Material / Insulation: G10 / Bottom plate: Carbon Steel

**OPTIONS:** Support design can be modified for length, insulation thickness and axial movement. Slide plates are provided depending on pipe movement.

**ORDERING:** Specify figure number, pipe size, description.



PIPE SIZE	SHOE LENGTH (L)	SHOE HEIGHT (H)	AXIAL LOAD (lb.)	LATERAL LOAD (lb.)	COMPRESSION LOAD (lb.)	AXIAL MOVEMENT (in.)
2	12	6	7,000	2,371	20,207	4
3	12	6	7,000	2,371	20,207	4
4	12	6	7,000	2,371	20,207	4
6	12	6	7,000	2,371	20,207	4
8	12	6	11,000	10,000	21,330	4
10	12	6	11,000	10,000	21,330	4
12	12	6	11,000	11,000	50,516	4
14	12	6	11,000	11,000	50,516	4
16	12	6	11,000	11,000	50,517	4
18	12	6	11,000	11,000	50,517	4
20	12	6	11,000	11,000	50,517	4
24	18	6	11,000	11,000	60,624	4
30	18	6	44,000	44,000	132,602	4
36	24	6	45,000	45,000	176,390	4
40	24	6	45,000	46,000	251,464	4
42	24	6	45,000	46,000	251,464	4
48	24	6	45,000	46,000	269,426	4
54	24	6	45,500	46,000	287,387	4

PIPESHOES02.XLS-04/22/17

FABRICATED PIPE SHOES & ANCHORS